



**BATHROOM** COLLECTION



*WetWall*

## WetWall panelling is the ideal choice for modern bathroom design.

As an alternative to tiles, WetWall can create a beautiful bathroom or shower enclosure that will last for years.

With our traditional Classics Range, our Italian inspired collection or our exquisite Boutique Range, WetWall can be applied to suit a variety of bathroom designs and individual tastes.

Specifically designed for areas that are subject to frequent wetting, WetWall panels are completely waterproof. Unlike tiles, WetWall does not require grouting and is very low maintenance once installed. WetWall can be fitted over most existing surfaces, including tiles and can transform your bathroom or shower enclosure instantly.

Our exclusive range of laminated and solid vanity surfaces can also be used to compliment or match your WetWall panels, creating an impressive coordinated finish to your room.

### Classics



### Italian



### Boutique

### Vanity Surfaces

WetWall panels are constructed of Medite Exterior Grade MDF, covered on the face with high pressure laminate and balancing laminate on the back of the panel. Our waterproof gluelines are D4 rated.

WetWall panels come with a 10 year guarantee.

The shower panels are produced with a square edged finish as standard but a tongue and grooved panel is available where larger wall areas are to be covered.

Type	Edge Detail	Width	Height	Thickness
Shower Panel	Square Edged	1200mm	2420mm	11mm
Shower Panel	Square Edged	900mm	2420mm	11mm
Wall Panel	Tounge & Grooved*	590mm	2420mm	11mm
Bathwall	Square Edged	900mm	2100mm	11mm

\* Venetian Mosaic, Azzuro, Alumo and Alu Graf are unavailable as Tongue & Grooved Panels.

Venetian Mosaic, Azzuro and Alu Graf square edged panels may need to be cut on site prior to installation to ensure that adjacent panels line up correctly.

Due to the inherent properties of Alumo and Alu Graf, these designs could be more prone to scratching and marking during installation and use. Extra care must therefore be taken when using these designs.

## Classics Range

WetWall Classics form a balanced range of elegant and timeless effects. From the delicate and subtle patterns of Arctic Marble and White Frost to the bolder shades of Alicante and Aegean Blue, this range suits many bathroom styles.

The popular colours within this range can create a beautiful and stylish finish to your bathroom.

Different designs within WetWall classics can be combined, adding complementary tones to your room and introducing greater depth.



62XMEDAAM Arctic Marble



62XMEDALG Lagoon



62XMEDANP Natural Pearl



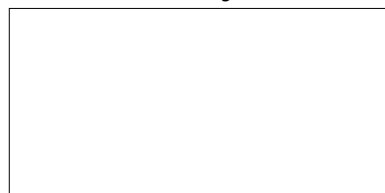
62XMEDAAB Aegean Blue



62XMEDAAP Aqua Pearl



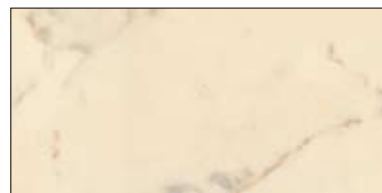
62XMEDATT Travertine



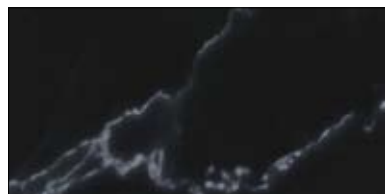
62XMEDAWG White Gloss



62XMEDACA Caspian Marble



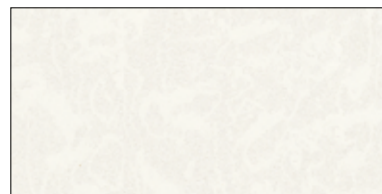
62XMEDAMM Med Marble



62XMEDAMI Midnight Marble



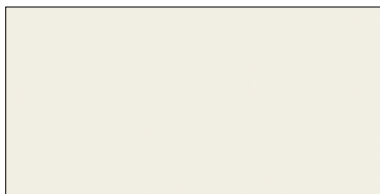
62XMEDACM Carrara Marble



62XMEDAWF White Frost



62XMEDAAC Alicante

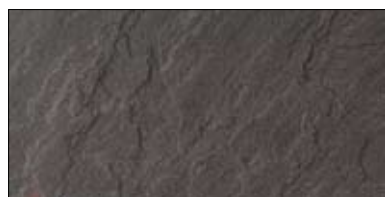


62XMEDAPG Pergamon

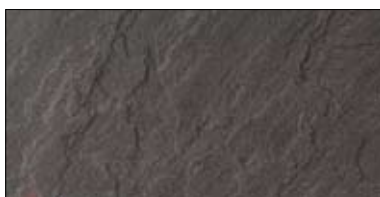
## Italian Range

This range consists of four chic, Italian inspired designs. All effects within this collection have been developed to give the illusion of a natural material, creating a luxurious ambience within your room.

Sicilian and Tuscan slate provide two alternative shades of slate that mimic that of natural rock. Used around the entire bathroom or within a separate shower enclosure, both effects provide a stunning finish to the design of your room.



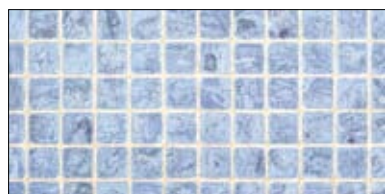
62XMEDASS Sicilian Slate



62XMEDASN Sicilian Slate Natural Texture



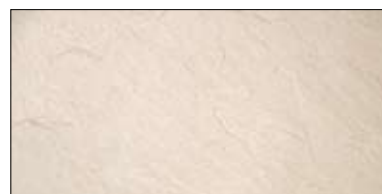
62XMEDAAZ Azzuro



62XMEDAVM Venetian Mosaic



62XMEDATM Turino Marble



62XMEDATS Tuscan Slate

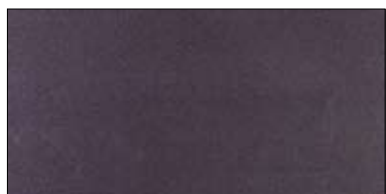
## Boutique Range

WetWall Boutique offers an exclusive collection of four contemporary, metallic effects. The designs available within this range can transform your bathroom into the focal point of your home.

The metallic designs of Alumo and Alu Graf are ideal for those wishing to achieve a minimalist look within their bathroom. The textured effect of Alu Graf gives the illusion of metallic mosaics, while Alumo has a sleek and satin finish.

Perfectly co-ordinated with our aluminium extrusions, Alumo and Alu Graf can be used around the entire bathroom area and are perfect for a Wetroom situation. Alternatively, the panels can be used within a separate shower enclosure for a dramatic focal point within the bathroom. These effects can be combined within your room or used in isolation...the design possibilities are endless.

Morning Haze and Silver Dusk both incorporate a subtle metallic shimmer into their design and glisten with natural twists of the light, drawing the eye to the panels and giving your enclosure spectacular, inquisitive depth



62XMEDASD Silver Dusk



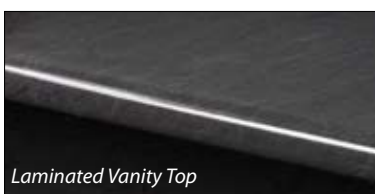
62XMEDAMH Morning Haze



62XMEDAAG Alu Graf



62XMEDAAL Alumo



Laminated Vanity Top



Solid Vanity Top

## Vanity Surfaces

A complimentary range of laminate and solid vanity surfaces.

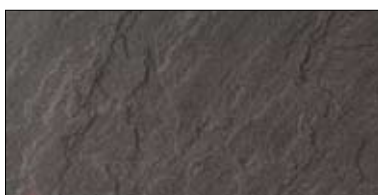
Our exclusive range of laminate vanity surfaces offer a choice of designs that have been selected from the Italian and Boutique collections. WetWall surfaces can be used to match or compliment the WetWall panels used around the bathroom or within your shower enclosure, creating an impressive co-ordinated finish to your room.

Constructed to a superior specification, all WetWall vanity surfaces are manufactured with a moisture resistant medite core to ensure it lives up to the demands of a modern bathroom environment whilst providing you with the ultimate in style and sophistication.

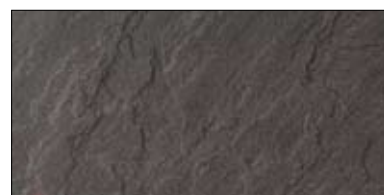
Vanity Top 27mm Overall thickness



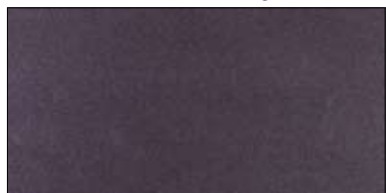
62XVBMH Morning Haze



62XVBSS Sicilian Slate



62XVBSN Sicilian Slate Natural Texture



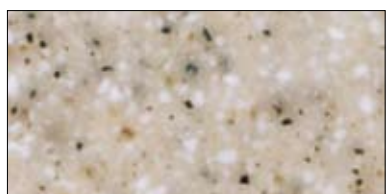
62XVBSD Silver Dusk



62XVBTM Turino Marble

Our three solid surfaces tops can add an extra touch of luxury to your room. From the warm natural tones of Cappuccino, the fresh and delicate design of Cristallo or the striking appearance of Basalto, our distinguished solid surface range can create a stunning effect to many bathroom styles whilst being durable and low in maintenance.

Vanity Top 29mm Overall thickness, 3mm Solid Surface & Front Edge



62XVSCA Cappuccino



62XVSBA Basalto



62XVSCR Cristallo

# Installation

## Specification

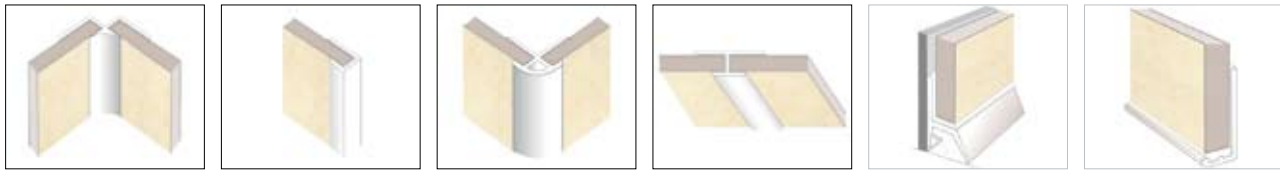
WetWall panels are constructed of Medite Exterior Grade MDF, covered on the face with high pressure laminate and balancing laminate to the back of the panel. Our waterproof gluelines are D4 rated. WetWall panels come with a 10 year guarantee \*\*

The shower panels are produced with a square edge finish as standard but a tongue and grooved panel is available where larger wall areas are to be covered.

Type	Edge Detail	Width	Height	Thickness	
Shower Panel	Square Edged	1200mm	2420mm	11mm	* Venetian Mosaic, Azzuro, Alumo and Alu Graf are unavailable as Tongue & Grooved panels. Venetian Mosaic, Azzuro and Alu Graf may need to be cut on site prior to installation to ensure that adjacent panels line up correctly. • Due to the inherent properties of Alumo and Alu Graf, these designs could be more prone to scratching and marking during installation and use. Extra care must therefore be taken when using these designs.
Shower Panel	Square Edged	900mm	2420mm	11mm	
Wall Panel	Tounge & Grooved*	590mm	2420mm	11mm	
Bathwall	Square Edged	900mm	2100mm	11mm	
laminated	Bullnosed	370mm	2400mm	27mm	
Solid Surface	Square Edge	370mm	1800mm	29mm	

## Accessories

WetWall profiles come in 2500mm lengths and are available in satin anodised aluminium, white, polished gold, polished silver and signal black finishes (unless otherwise indicated). It is recommended that WetWall Silicone Sealant and Adhesive is used for all installations.



Internal Corner

End Cap

External Corner

H-Joint

WetSeat

only in white

Bottom Profile

only in satin anodised aluminium

## Fitting Instructions

Prior to installation, WetWall panels must be conditioned for a minimum of 48 hours in the environment to which the panels are being installed.



### Cutting

When cutting the panels to width and height with a handsaw, the decorative face should be upwards. When cutting with a jigsaw or circular saw the decorative face should be downwards.

### Wall Surface

WetWall can be fixed to most surfaces using WetWall Adhesive providing they are sound and free from loose particles. WetWall can also be fixed directly onto existing tiling.

### Apertures

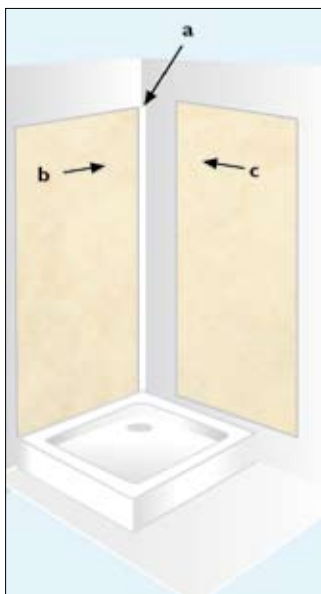
A clearance of 2mm should be left where pipes or fittings come through the panel even where collars are to be fitted. The clearance should then be filled with WetWall Silicone Sealant.

### Sealing

A 2mm gap should be left above the shower tray or bath by using packers when fixing panels. The gaps should then be sealed using WetWall Silicone Sealant should also be used in all the corner and capping profiles.

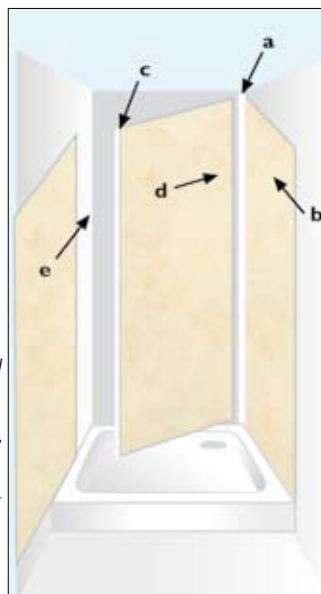
### Fittings

Fittings and showers attachments can be fixed directly to the panels using suitable fixings. Heavy items may require additional provisions to be made.



### Two Sided Shower

1. Fix an internal corner profile (a) into the corner. Apply a bead of WetWall sealant into one channel of the profile. 2. Peel back protective coating from edges of panel.
3. If End Cap profiles are required, they must be fitted to the exposed edge of the panel prior to fixing.
4. Apply a bead of WetWall sealant into a channel of the profile.
5. Apply a generous amount of WetWall panel adhesive to the back of the first panel (b) then insert into the corner profile ensuring that there is a 2mm clearance at the bottom and fix the panel to the wall.
6. Apply a second bead of WetWall sealant into the other channel and fix the second panel (c) as above.
7. Once the panels are fitted sealing must be carried out to bottom of the panels and to any other exposed edges.
8. Remove the protective film from the face of the panel.



### Three Sided Shower

1. Fix an internal corner profile (a) into one of the corners. Apply a beads of WetWall sealant into both channels of this profile.
2. Peel back protective coating from edges of panel.
3. If End Cap profiles are required, they must be fitted to the exposed edge of the panel prior to fixing.
4. Apply a bead of WetWall sealant into a channel of the profile.
5. Apply a generous amount of WetWall panel adhesive to the back of the first side panel (b) then insert into the corner profile (a) ensuring that there is a 2mm clearance at the bottom and fix the panel firmly to the wall.
6. Apply a bead of WetWall sealant into the other internal corner profile (c) and fix to the edge of the back panel (d). Apply a generous amount of WetWall panel adhesive to the back of the panel.
7. Insert the exposed edge of the back panel into the remaining channel (a) of the first profile and swing the panel into place against the back wall.
8. Apply a bead of WetWall Sealant into the remaining channel (c) and fix the second wall panel (e).
9. Once the panels are fitted sealing must be carried out to bottom of the panels and to any other exposed edges.
10. Remove the protective film from the face of the panel.



Web: [www.mcdermottdistribution.co.uk](http://www.mcdermottdistribution.co.uk)